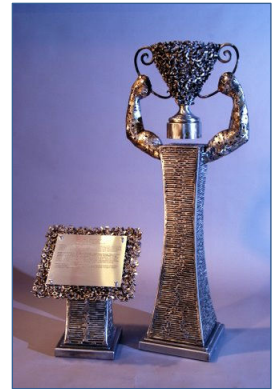


KILOWATT CRACKDOWN

FACT SHEET

ABOUT THE CONTESTANTS

- 53 buildings completed the contest
- Participants represent over 18 million sq. ft. of office space – roughly 20% of the entire Puget Sound office inventory
- Avg. building age is 24 years old
- Avg. size is 340,000 sq. ft.
- 15 buildings participating from the eastside and 38 from westside
- Buildings in Seattle, Bellevue, Redmond, Bothell, Everett, Issaquah, and Tacoma participated



THE WINNERS

Winner of the Kilowatt Cup: *Building, team, or company demonstrating an outstanding accomplishment in all-around energy performance.*

- Winner: Unico Properties, LLC: Metropolitan Tract Team
- Dan Novack, General Manager
 - Clarence Clipper, Chief Engineer
 - Brett Phillips, Sustainability Project Coordinator

Highest Performance: Properties demonstrating the highest energy performance rating as of December 2008.

- 1st Place: Federal Office Building, managed by GSA
2nd Place: Skinner Building, managed by Unico Properties, LLC
3rd Place: (TIE) IDX Tower at Fourth & Madison, managed by Hines;
Washington Mutual Tower, managed by Wright Runstad & Co.

Greatest Improvement in performance: Properties demonstrating the most significant gains in energy performance rating over the course of 2008.

- 1st Place: Financial Center, managed by Unico Properties, LLC
2nd Place: World Trade Center North, managed by Wright Runstad & Co.
3rd Place: IBM Building, managed by Unico Properties, LLC

PERFORMANCE NUMBERS

- Average ENERGY STAR® rating went from 71.3 (Dec. 2007) to 73.9 (Dec. 2008)
- 31 buildings were ENERGY STAR certified
- Combined, the participating buildings saved 1 megawatts of electricity - equal to the annual energy consumption of 1,000 Northwest home or 700,000 gallons of gasoline.

KEY MILESTONES

Fall 2007	Contest Kickoff
January 2008	Initial ENERGY STAR rating submitted
Across 2008	1) Improvements and changes 2) Engineering site visits 3) ENERGY STAR certifications
March 2009	Final ENERGY STAR ratings submitted

ENERGY STAR QUALIFYING BUILDINGS

- 1000 Dexter, RREEF Management
- 1100 Dexter, RREEF Management
- 1700 Seventh Ave, Clise Properties
- 4300 Roosevelt, RREEF Management
- 4311 11th Avenue NE, RREEF Management
- 605 Union Station, CP Management
- 705 Union Station, CP Management
- Amazon.Com Building, Wright Runstad & Co.
- Bank of America Fifth Ave Plaza II, Hines
- Bellevue City Hall, City of Bellevue
- Century Square, Bentall Capital
- Five Newport, Bentall Capital
- Intergate East III (DHS), Sabey Corporation
- King Street Center, Wright Runstad & Co.
- One Convention Place, RREEF Management
- Park Place Building, Wright, Runstad & Co.
- Plaza 600, The Vance Corporation
- Plaza Center, CAC Real Estate Management Co.
- Plaza East, CAC Real Estate Management Co.
- Puget Sound Plaza, Unico Properties LLC
- Seattle Municipal Tower, CBRE
- The Tower Building, The Vance Corporation
- US Bank Centre, Bentall Capital
- US Bank Plaza, CAC Real Estate Management Co.

PARTICIPATING COMPANIES

- [Able Engineering](#)
- [Bentall Capital](#)
- [CAC Real Estate Management Co.](#)
- [CBRE](#)
- [City of Bellevue](#)
- [Clise Properties, Inc.](#)
- [CP Management](#)
- [Cushman & Wakefield of WA](#)
- [Facilities Partners](#)
- [Glacier Management](#)
- [GSA](#)
- [GVA Kidder Mathews](#)
- [Hines](#)
- [McDonald Miller](#)
- [McKinstry](#)
- [PEMCO Insurance Co.](#)
- [RREEF Management](#)
- [The Vance Corporation](#)
- [Unico Properties LLC](#)
- [Wright Runstad & Co.](#)

* Hi-res images of winning building and event are available upon request.